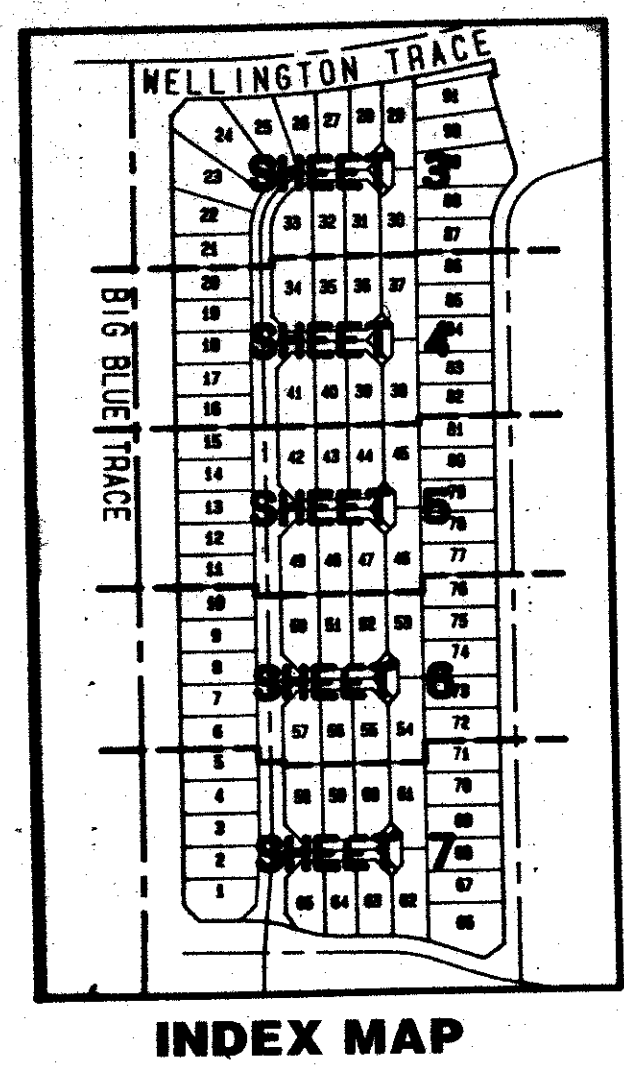
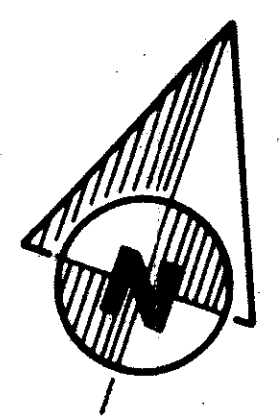
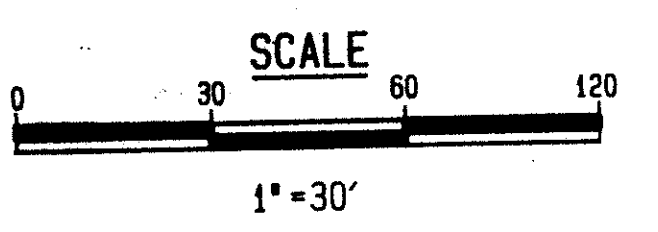


EMERALD FOREST PLAT NO. 2 OF WELLINGTON - P. U. D.

BEING A REPLAT OF PART OF EMERALD FOREST OF WELLINGTON - P. U. D. AS
RECORDED IN PLAT BOOK 56, PAGES 177-181, INCLUSIVE, PUBLIC RECORDS
OF PALM BEACH COUNTY, FLORIDA AND OTHER LANDS.

LYING IN PART OF SECTIONS 4 AND 9
TOWNSHIP 44 SOUTH, RANGE 41 EAST
PALM BEACH COUNTY, FLORIDA

SHEET 3 OF 7 SHEETS
JANUARY 1991



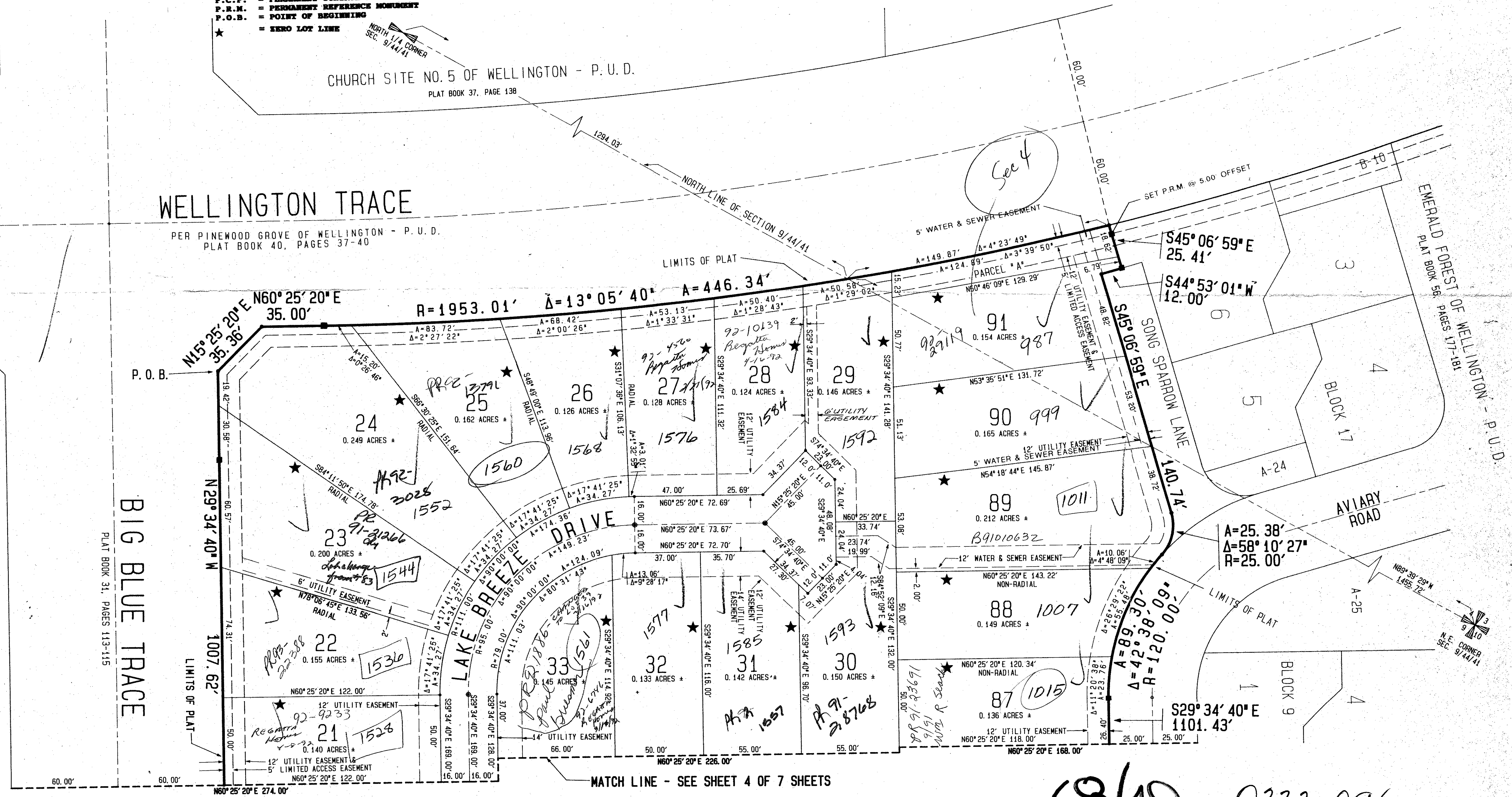
- LEGEND**
- BLK. = BLOCK
 - R/W = RIGHT-OF-WAY
 - P.C. = POINT OF CURVATURE
 - P.B.C. = PALM BEACH COUNTY
 - NO. = NUMBER
 - P.U.D. = PLANNED UNIT DEVELOPMENT
 - + = MORE OR LESS
 - A = ARC LENGTH
 - Δ = CENTRAL ANGLE
 - R = RADIUS
 - = CENTERLINE
 - D.U. = DWELLING UNIT
 - P.L.S. = PROFESSIONAL LAND SURVEYOR
 - P.C.P. = PERMANENT CONTROL POINT
 - P.R.M. = PERMANENT REFERENCE MONUMENT
 - P.O.B. = POINT OF BEGINNING
 - ★ = ZERO LOT LINE

CHURCH SITE NO. 5 OF WELLINGTON - P. U. D.
PLAT BOOK 37, PAGE 138

WELLINGTON TRACE
PER PINWOOD GROVE OF WELLINGTON - P. U. D.
PLAT BOOK 40, PAGES 37-40

GREENVIEW SHORES NO. 1 OF WELLINGTON - P. U. D.
PLAT BOOK 31, PAGES 113-115

BIG BLUE TRACE
PLAT BOOK 31, PAGES 113-115



MATCH LINE - SEE SHEET 4 OF 7 SHEETS

EXISTING EASEMENTS PER THE PARENT PLAT OF EMERALD FOREST OF WELLINGTON - P. U. D. HAVE BEEN ABANDONED IN OFFICIAL RECORD BOOK 6712, PAGES 1961 THROUGH 1964, INCLUSIVE, OF THE PUBLIC RECORDS OF PALM BEACH COUNTY, FLORIDA.

68/49

0332-096

EMERALD FOREST #2

Dailey-Fotony, inc.
land surveyors, planners, engineers
5050 10th Avenue North, Suite B - Lake Worth, Florida 33463-2602
Phone 407/965-8787

SUBDIVISION OF EMERALD FOREST PLAT 2
BOOK 68 PAGE 49
FLOOD ZONE 1B
COUNTY AK
TOWNSHIP 44
RANGE 41
SECTION 9
PLAT NO. 2
DATE 01/11/91
BY 457/457/457

TAZ 727